

Models Available: Cell line derived xenografts or allografts covering subcutaneous, orthotopic, and systemic models

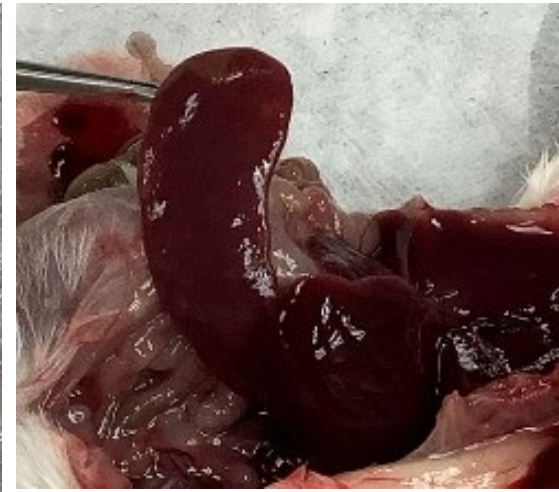
Cancer types: Breast, Lung, Pancreatic, Colon, Melanoma, Prostate, Liver, Ovarian

Orthotopic model 1

4T1 (mouse) metastatic breast cancer model

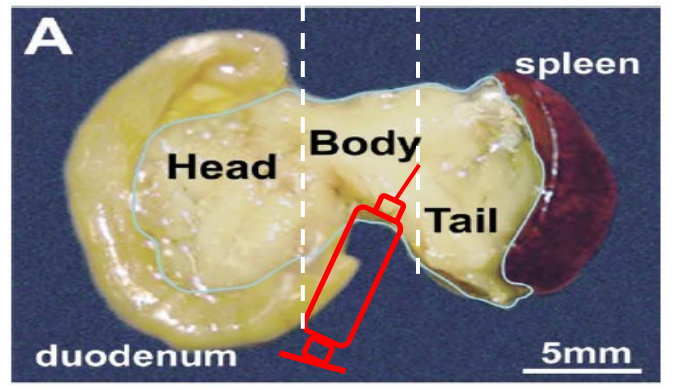
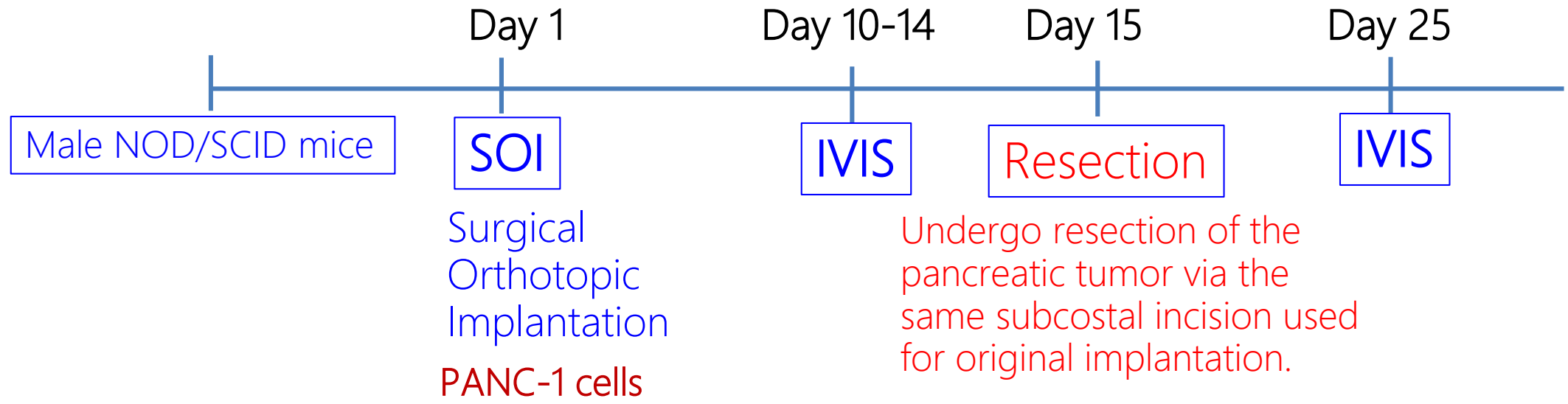
- an orthotopic allograft model (also called the spontaneous tumor metastasis model),
- Orthotopic inoculation of 4T1 mouse mammary tumor cells in the **fourth inguinal mammary fat pad**
- the spontaneous metastasis to the **lung**

4T1 tumor in **BALB/c**

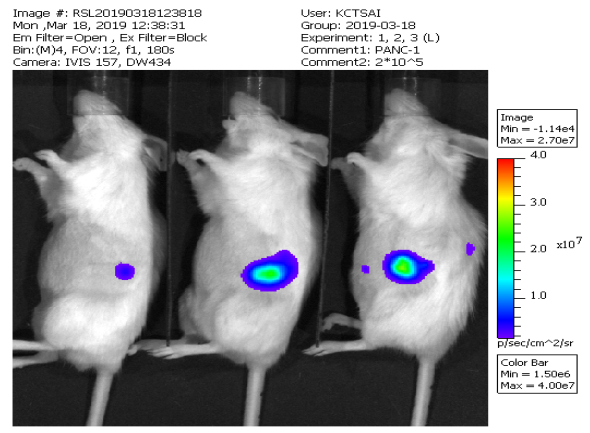


Orthotopic model 2

A pancreatic cancer orthotopic and metastatic model in NOD/SCID mice



Neuroscience 137 (2006) 1417–1426



Orthotopic model 3

1. To establish an orthotopic mouse model of hepatocellular carcinoma (HCC) via Ultrasound-Guided Liver Injection with HCC cells

- C57BL/6JNarl mice
- HepG2-Luc cells and Matrigel (1:1) + Evans blue
- Hamilton syringe
- Peristaltic Pump

